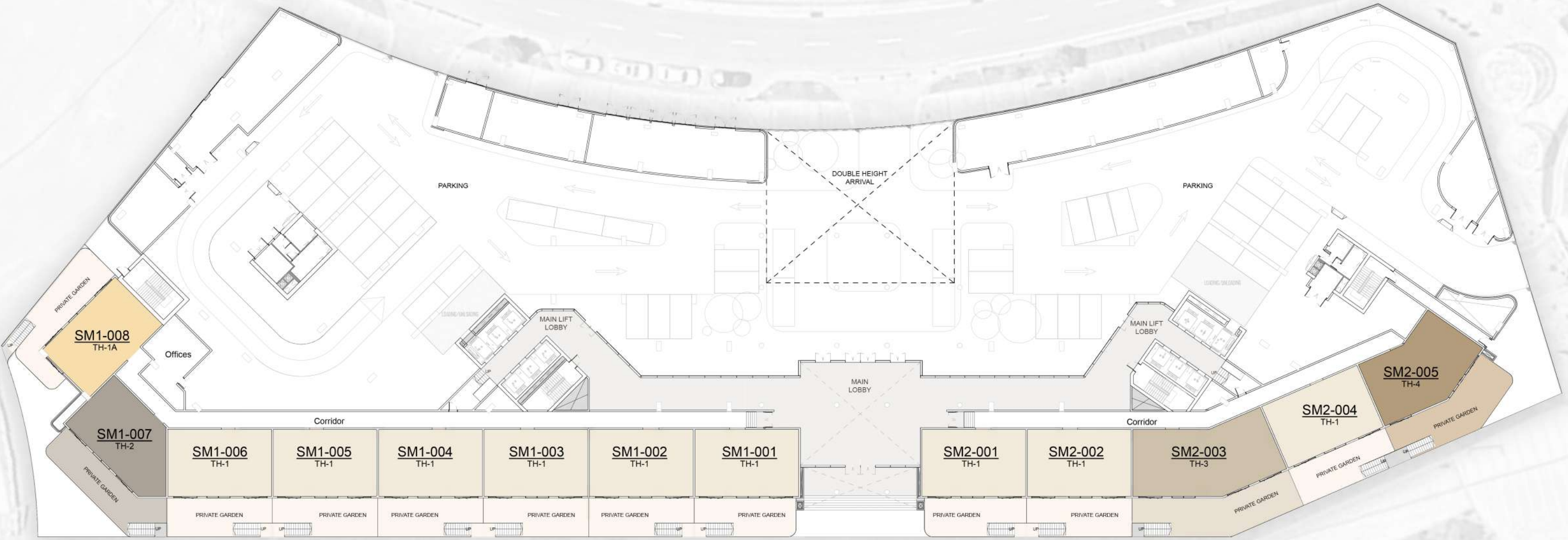


GROUND FLOOR PLAN



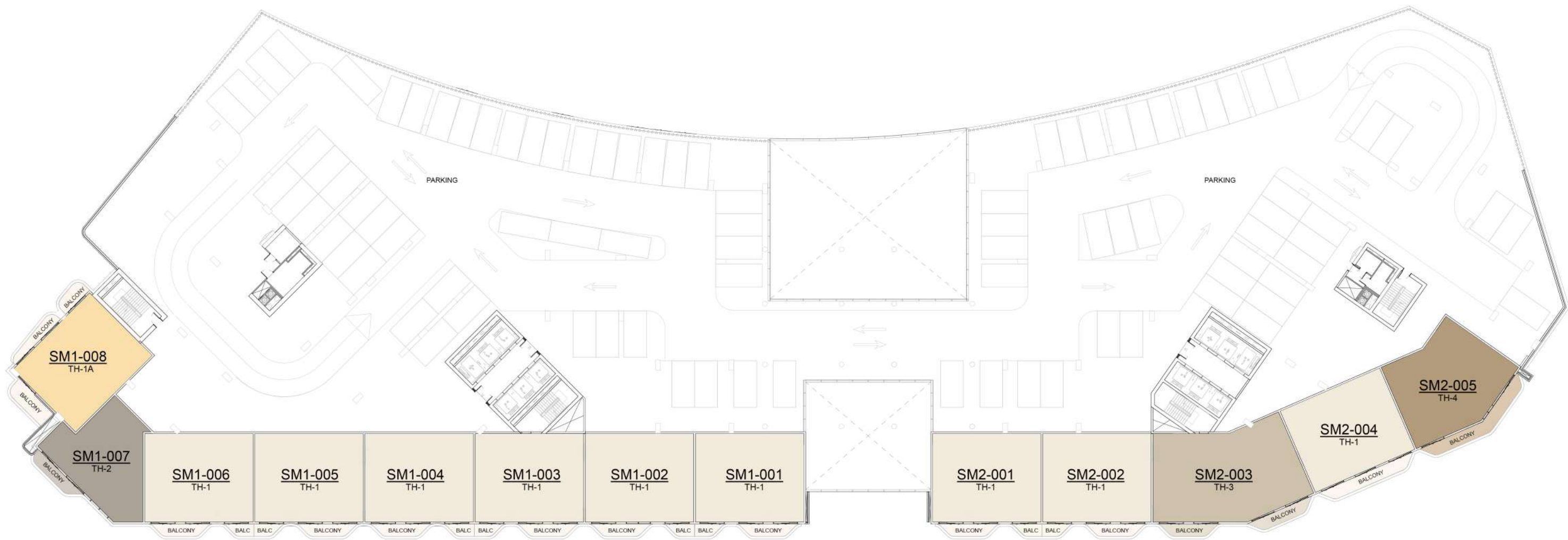
DESCRIPTION

- TH - TYPE 1
- TH - TYPE 1A
- TH - TYPE 2
- TH - TYPE 3
- TH - TYPE 4

Floor layouts must only be referred for locating the unit type on a floor. Balcony profiles may differ slightly during subsequent design development stages.

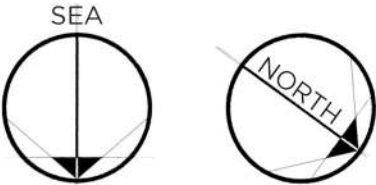
TH: Duplex Townhouse PH: Duplex Penthouse 1BR: One Bedroom 2BR: Two Bedroom 3BR: Three Bedroom

1ST PODIUM FLOOR PLAN



DESCRIPTION

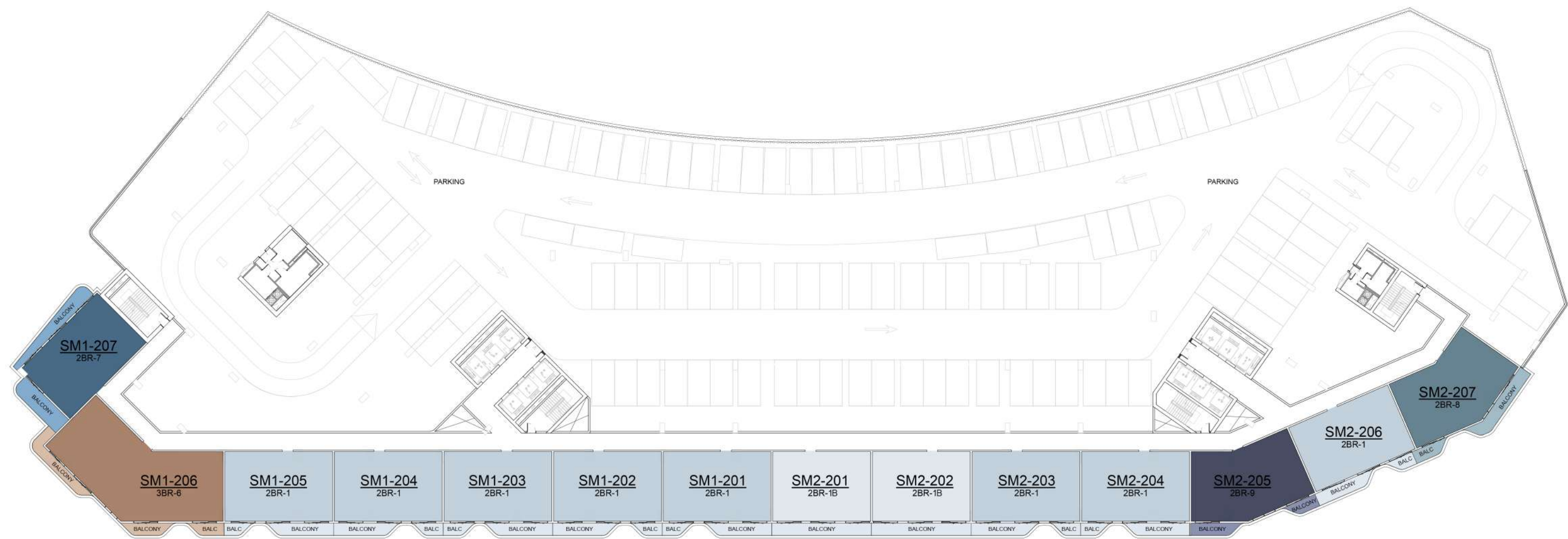
- TH - TYPE 1
- TH - TYPE 1A
- TH - TYPE 2
- TH - TYPE 3
- TH - TYPE 4



Floor layouts must only be referred for locating the unit type on a floor. Balcony profiles may differ slightly during subsequent design development stages.

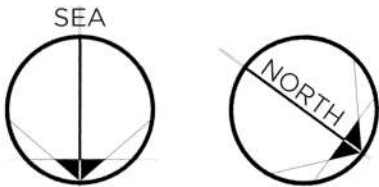
TH: Duplex Townhouse PH: Duplex Penthouse 1BR: One Bedroom 2BR: Two Bedroom 3BR: Three Bedroom

2ND TO 4TH PODIUM FLOOR PLAN



DESCRIPTION

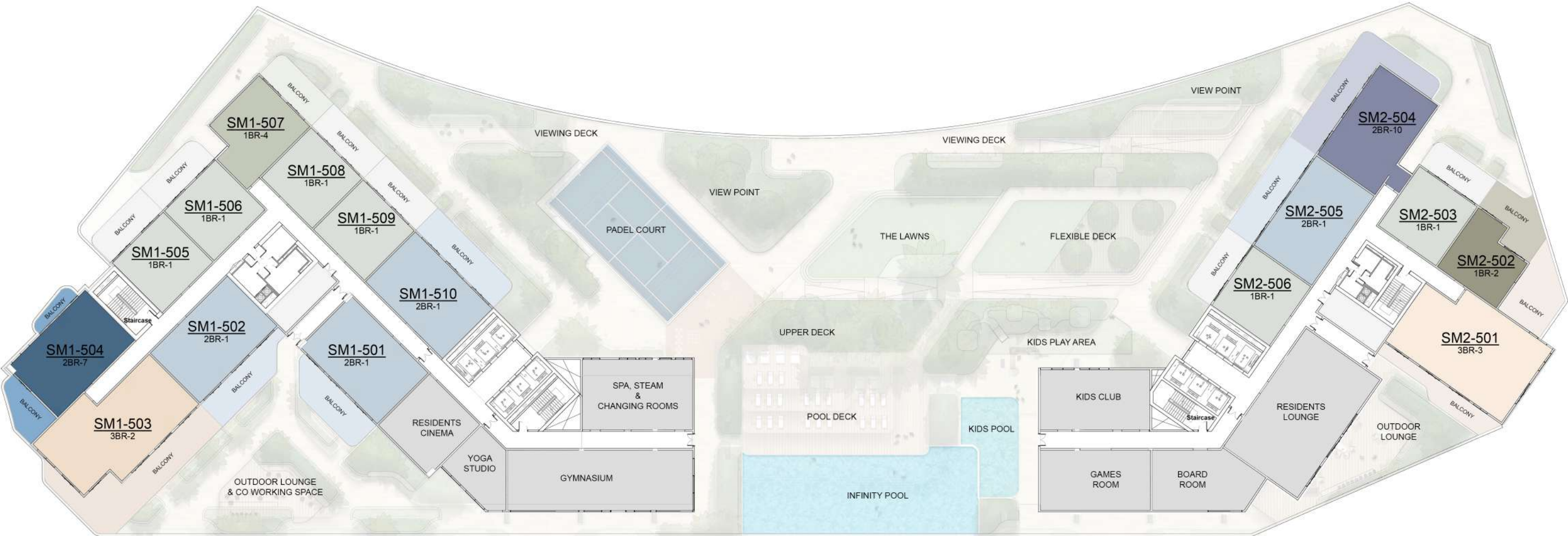
<div></div>	2BR - TYPE 1	<div></div>	3BR - TYPE 6
<div></div>	2BR - TYPE 1B		
<div></div>	2BR - TYPE 7		
<div></div>	2BR - TYPE 8		
<div></div>	2BR - TYPE 9		



Floor layouts must only be referred for locating the unit type on a floor. Balcony profiles may differ slightly during subsequent design development stages.

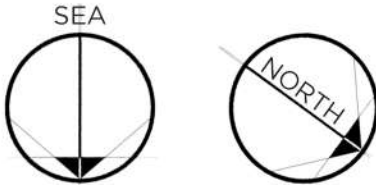
TH: Duplex Townhouse PH: Duplex Penthouse 1BR: One Bedroom 2BR: Two Bedroom 3BR: Three Bedroom

5TH FLOOR PLAN



DESCRIPTION

1BR - TYPE 1	2BR - TYPE 1	3BR - TYPE 2
1BR - TYPE 2	2BR - TYPE 7	3BR - TYPE 3
1BR - TYPE 4	2BR - TYPE 10	

















Floor layouts must only be referred for locating the unit type on a floor. Balcony profiles may differ slightly during subsequent design development stages.

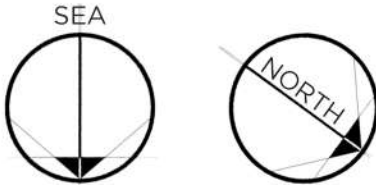
TH: Duplex Townhouse PH: Duplex Penthouse 1BR: One Bedroom 2BR: Two Bedroom 3BR: Three Bedroom

6TH TO 10TH FLOOR PLAN



DESCRIPTION

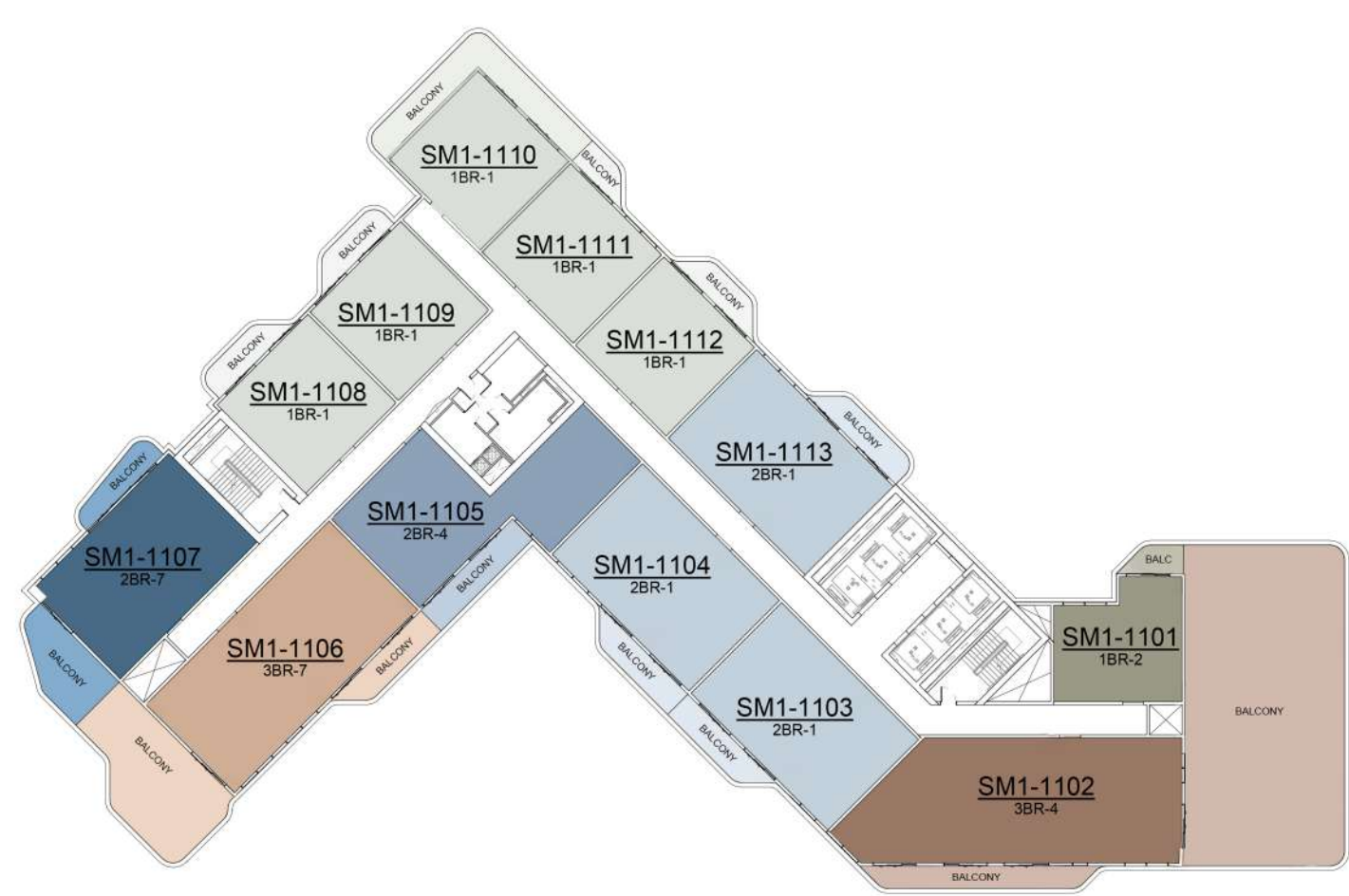
 1BR - TYPE 1	 2BR - TYPE 1	 2BR - TYPE 7	 3BR - TYPE 7
 1BR - TYPE 2	 2BR - TYPE 3	 2BR - TYPE 10	
 1BR - TYPE 3	 2BR - TYPE 4	 2BR - TYPE 12	
 1BR - TYPE 4	 2BR - TYPE 5	 2BR - TYPE 13	
	 2BR - TYPE 6		



Floor layouts must only be referred for locating the unit type on a floor. Balcony profiles may differ slightly during subsequent design development stages.

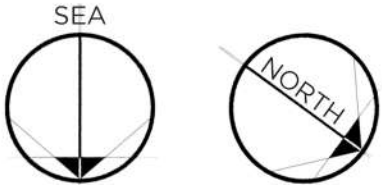
TH: Duplex Townhouse PH: Duplex Penthouse 1BR: One Bedroom 2BR: Two Bedroom 3BR: Three Bedroom

11TH TO 12TH FLOOR PLAN



DESCRIPTION

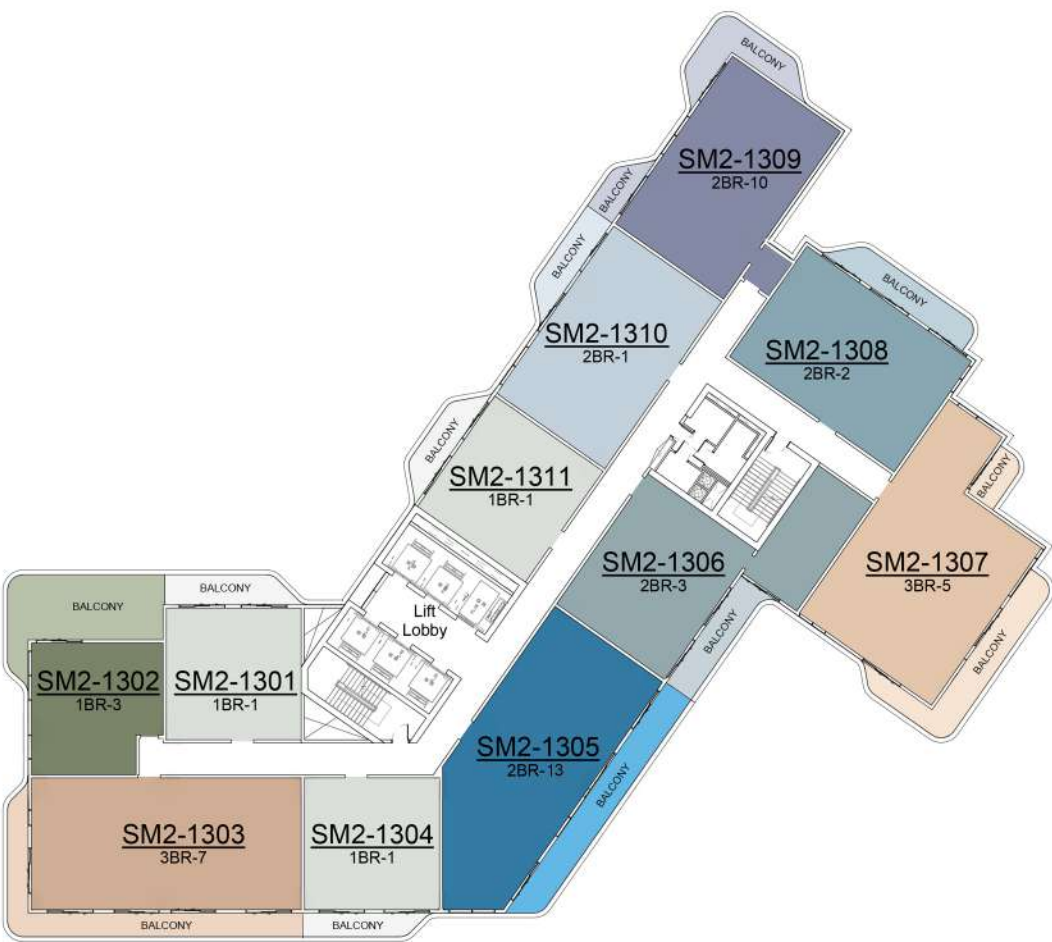
1BR - TYPE 1	2BR - TYPE 1	2BR - TYPE 7	3BR - TYPE 4
1BR - TYPE 2	2BR - TYPE 1A	2BR - TYPE 10	3BR - TYPE 5
	2BR - TYPE 2	2BR - TYPE 13	3BR - TYPE 7
	2BR - TYPE 3		
	2BR - TYPE 4		



Floor layouts must only be referred for locating the unit type on a floor. Balcony profiles may differ slightly during subsequent design development stages.

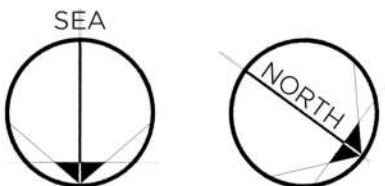
TH: Duplex Townhouse PH: Duplex Penthouse 1BR: One Bedroom 2BR: Two Bedroom 3BR: Three Bedroom

13TH TO 20TH FLOOR PLAN



DESCRIPTION

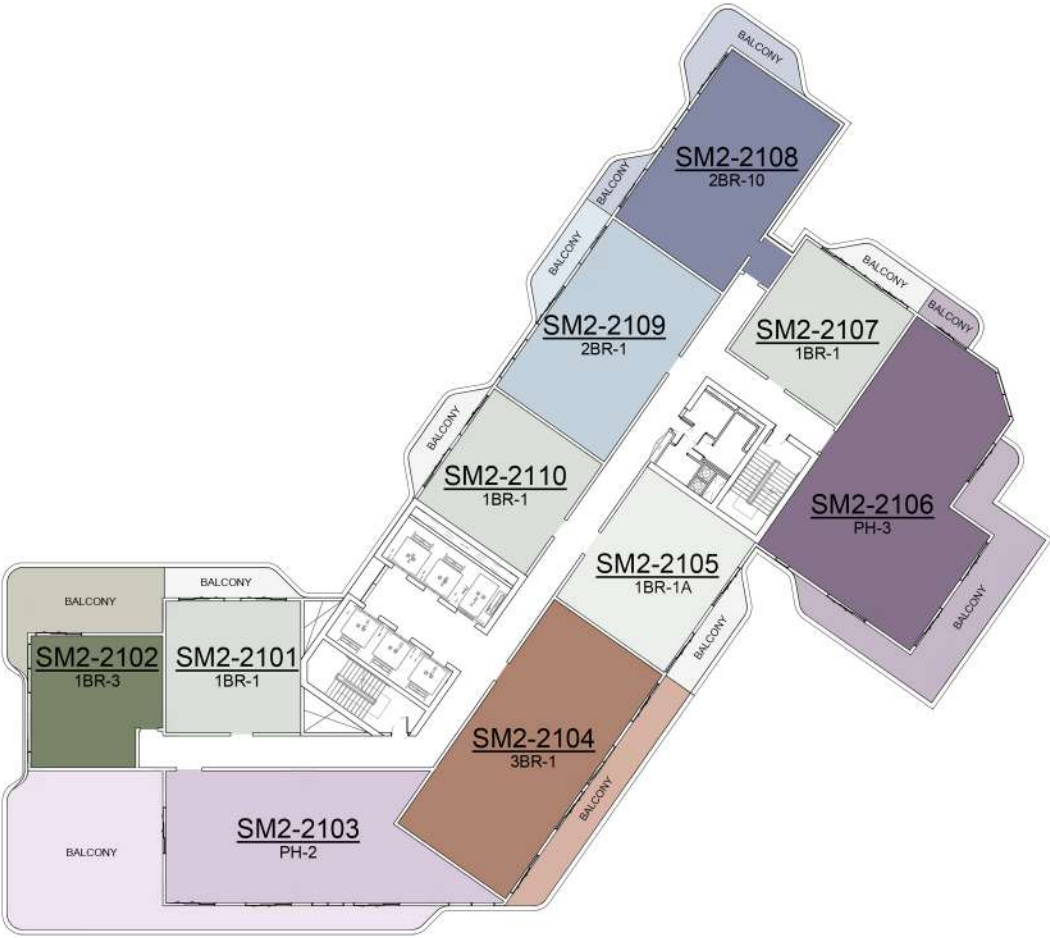
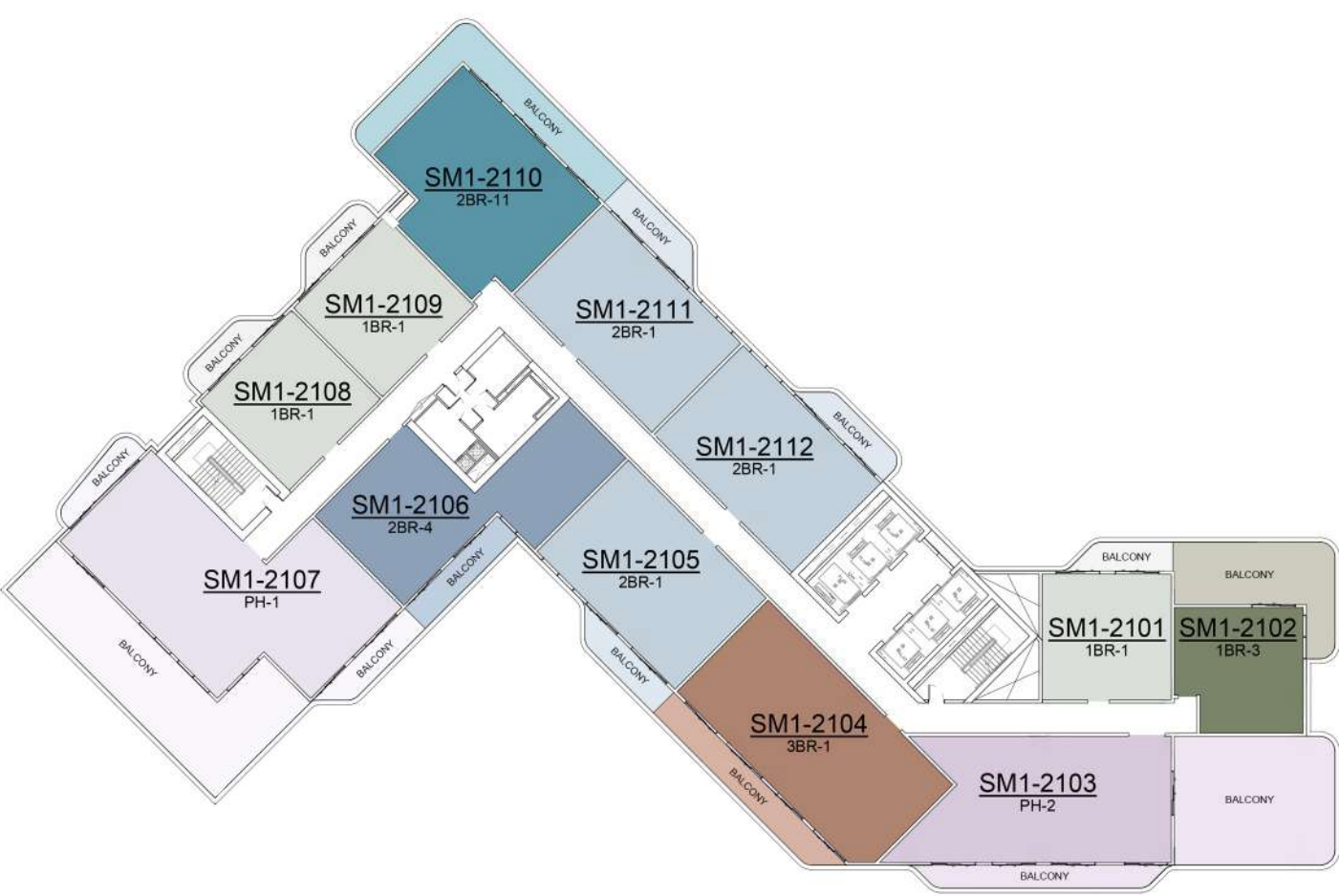
1BR - TYPE 1	2BR - TYPE 1	2BR - TYPE 10	3BR - TYPE 5
1BR - TYPE 3	2BR - TYPE 2	2BR - TYPE 11	3BR - TYPE 7
	2BR - TYPE 3	2BR - TYPE 12	
	2BR - TYPE 4	2BR - TYPE 13	
	2BR - TYPE 7		



Floor layouts must only be referred for locating the unit type on a floor. Balcony profiles may differ slightly during subsequent design development stages.

TH: Duplex Townhouse PH: Duplex Penthouse 1BR: One Bedroom 2BR: Two Bedroom 3BR: Three Bedroom

21ST TO 22ND FLOOR PLAN



DESCRIPTION

1BR - TYPE 1	2BR - TYPE 1	3BR - TYPE 1	PH - TYPE 1
1BR - TYPE 1A	2BR - TYPE 4		PH - TYPE 2
1BR - TYPE 3	2BR - TYPE 10		PH - TYPE 3
	2BR - TYPE 11		

Floor layouts must only be referred for locating the unit type on a floor. Balcony profiles may differ slightly during subsequent design development stages.

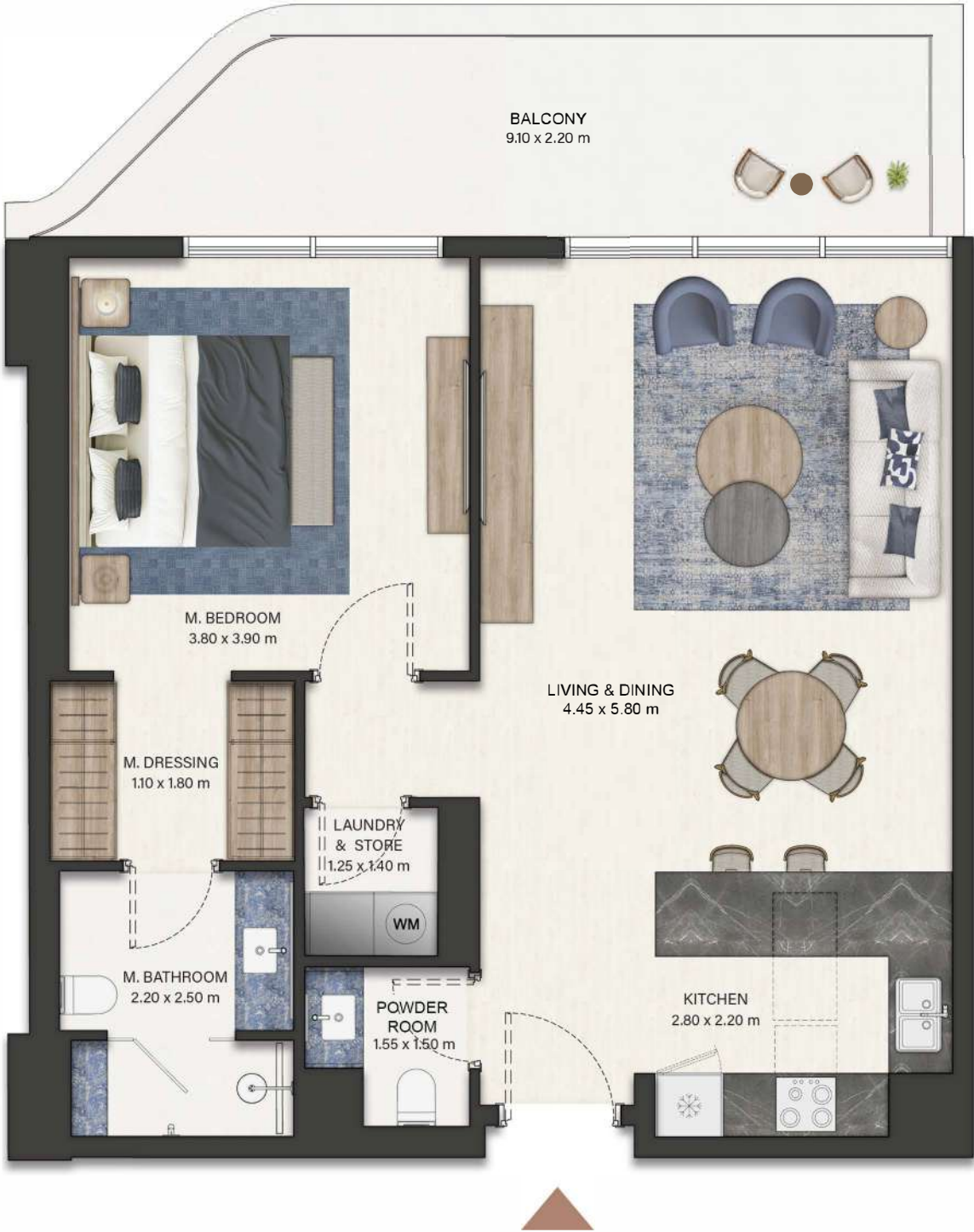
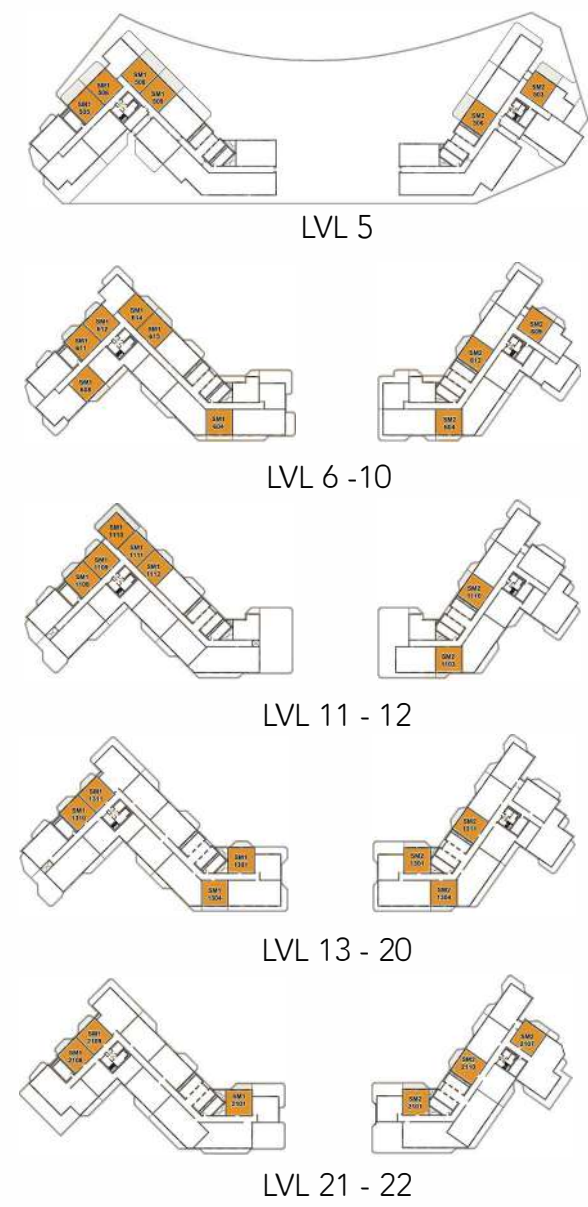


TH: Duplex Townhouse PH: Duplex Penthouse 1BR: One Bedroom 2BR: Two Bedroom 3BR: Three Bedroom

ONE BEDROOM (TYPE - 1)

No. of BR	1
Total Area	808 Sq.ft *

(*) Starting from

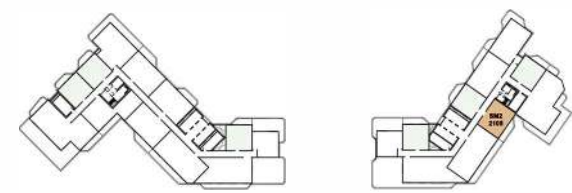
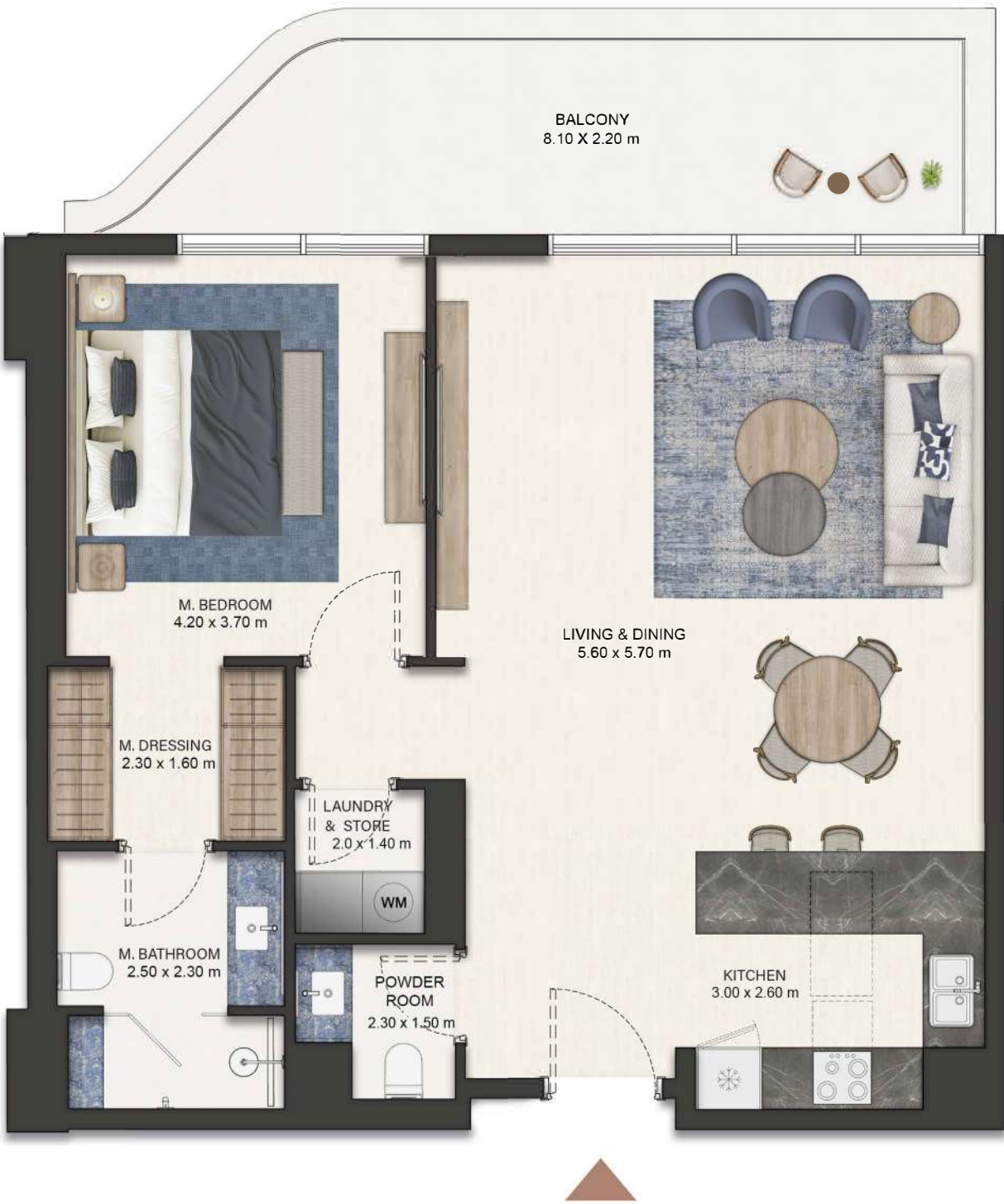


Disclaimer: Dimensions, apartment areas & layouts are indicative and may differ slightly during subsequent design development stages

ONE BEDROOM (TYPE - 1A)

No. of BR	1
Total Area	1,038 Sq.ft

(*) Starting from



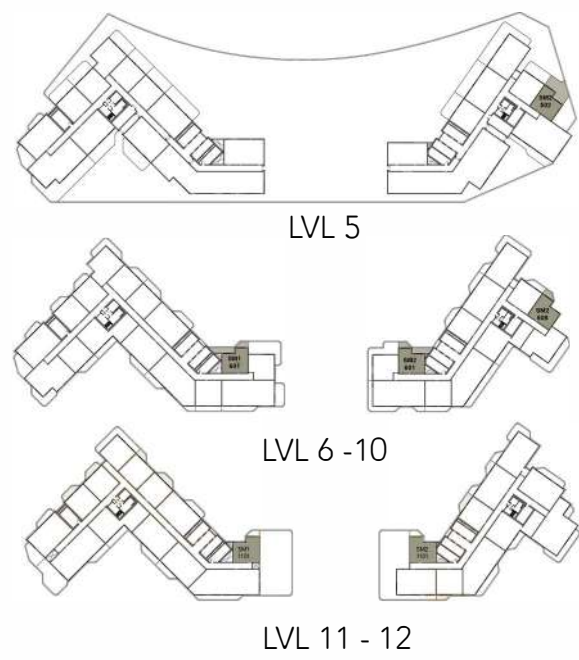
LVL 21 - 22

Disclaimer: Dimensions, apartment areas & layouts are indicative and may differ slightly during subsequent design development stages

ONE BEDROOM (TYPE - 2)

No. of BR	1
Total Area	731 Sq.ft *

(*) Starting from

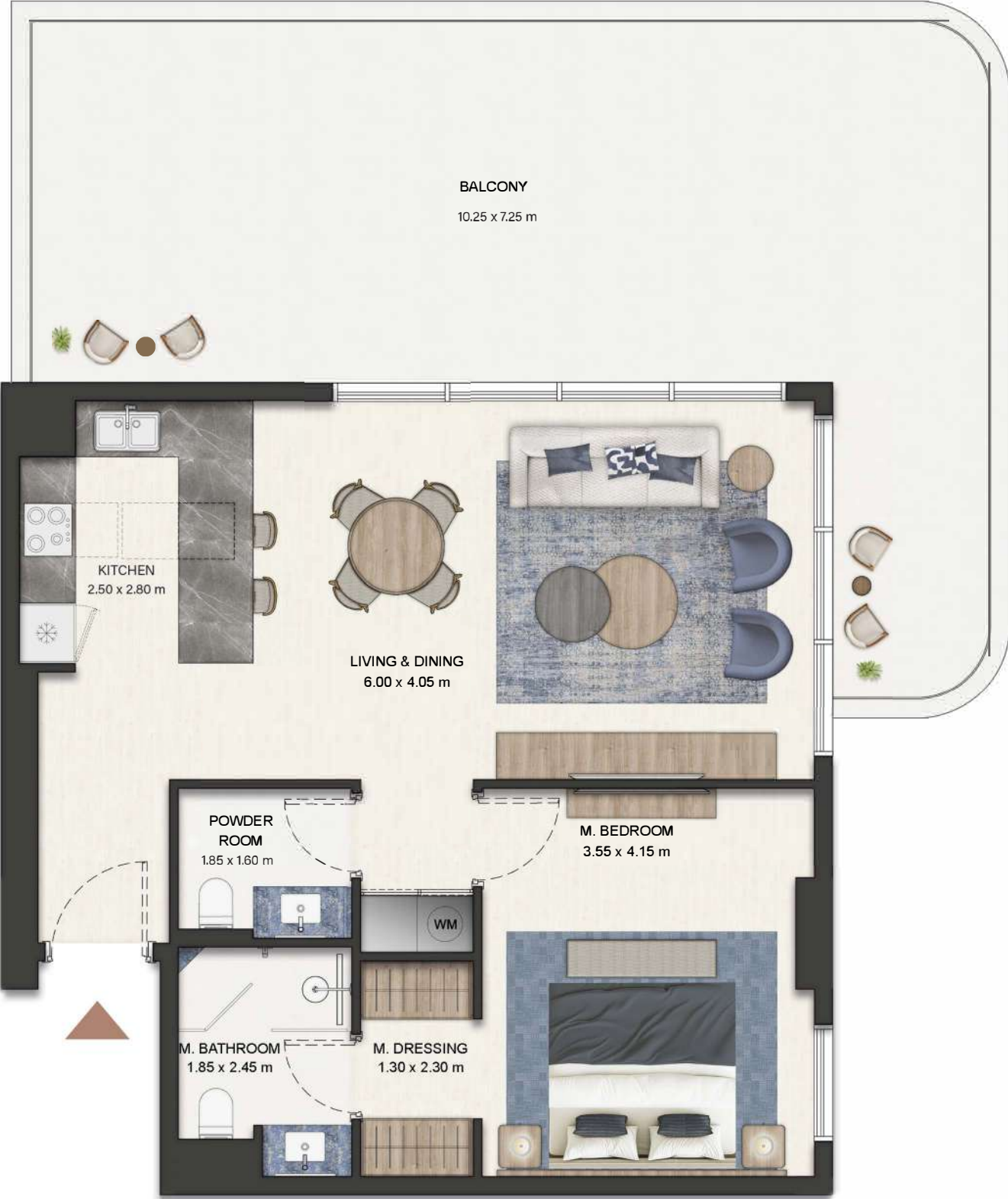
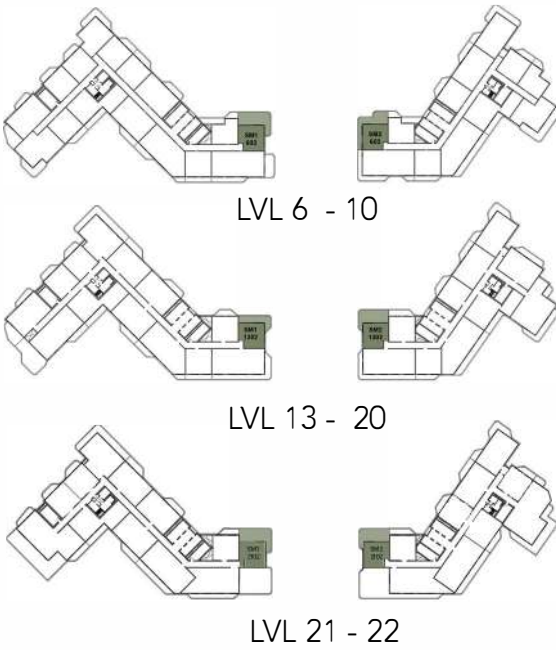


Disclaimer: Dimensions, apartment areas & layouts are indicative and may differ slightly during subsequent design development stages

ONE BEDROOM (TYPE - 3)

No. of BR	1
Total Area	1,020 Sq.ft *

(*) Starting from

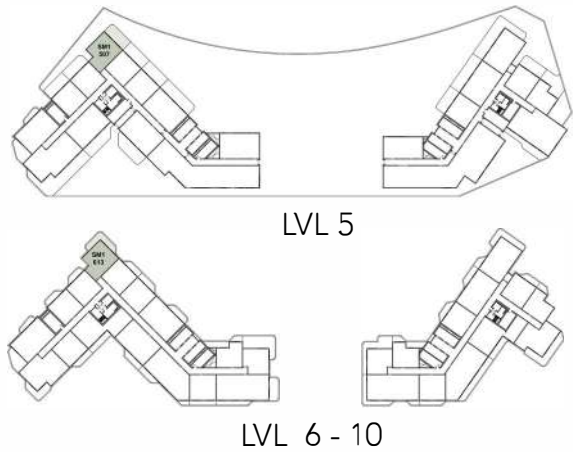


Disclaimer: Dimensions, apartment areas & layouts are indicative and may differ slightly during subsequent design development stages

ONE BEDROOM (TYPE - 4)

No. of BR	1
Total Area	1,157 Sq.ft *

(*) Starting from

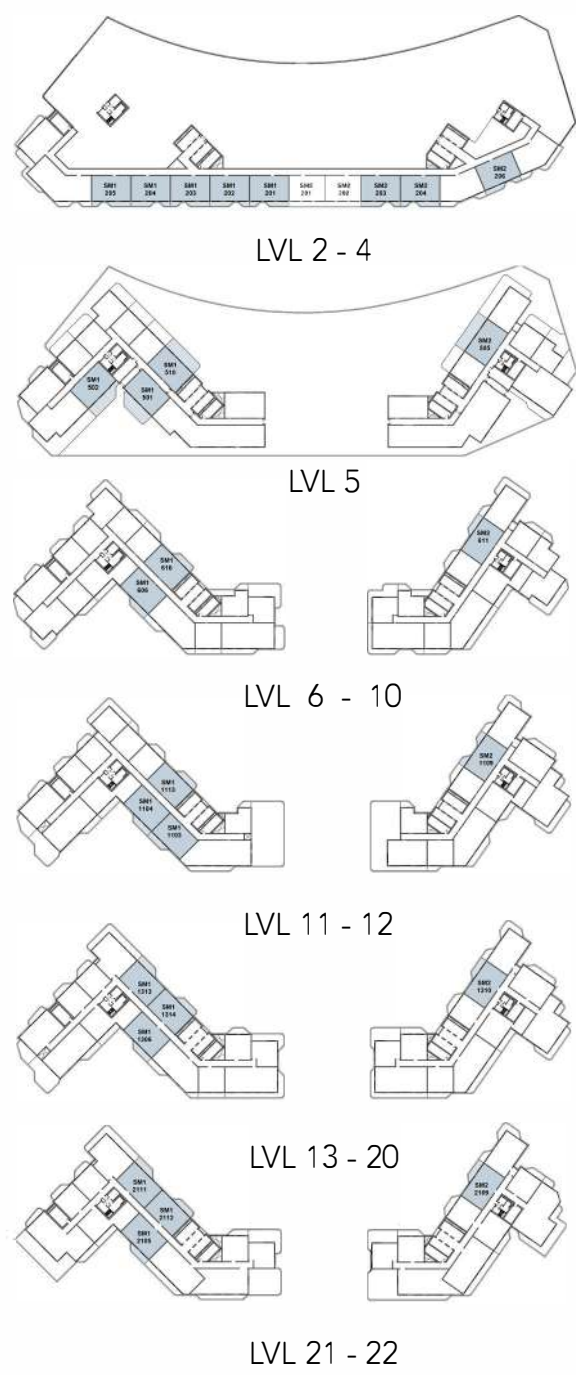


Disclaimer: Dimensions, apartment areas & layouts are indicative and may differ slightly during subsequent design development stages

TWO BEDROOM (TYPE - 1)

No. of BR	2
Total Area	1,273 Sq.ft *

(*) Starting from

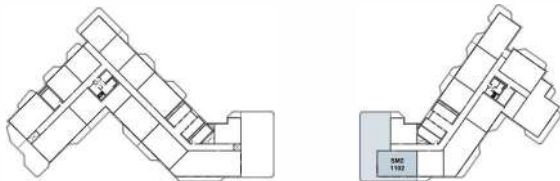


Disclaimer: Dimensions, apartment areas & layouts are indicative and may differ slightly during subsequent design development stages

TWO BEDROOM (TYPE - 1A)

No. of BR	2
Total Area	3,311 Sq.ft *

(*) Starting from



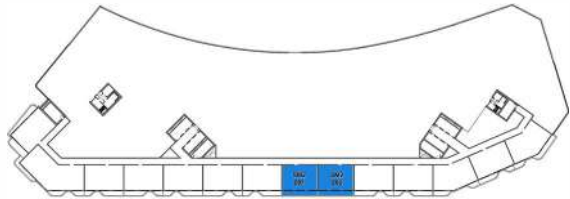
LVL 11-12



TWO BEDROOM (TYPE - 1B)

No. of BR	2
Total Area	1,237 Sq.ft *

(*) Starting from



LVL 2 - 4

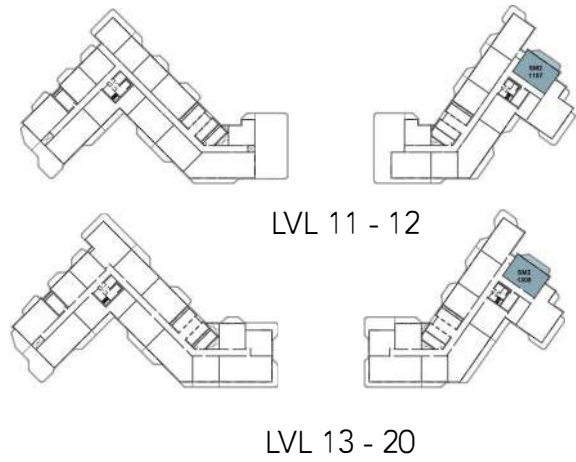


Disclaimer: Dimensions, apartment areas & layouts are indicative and may differ slightly during subsequent design development stages

TWO BEDROOM (TYPE - 2)

No. of BR	2
Total Area	1,284 Sq.ft *

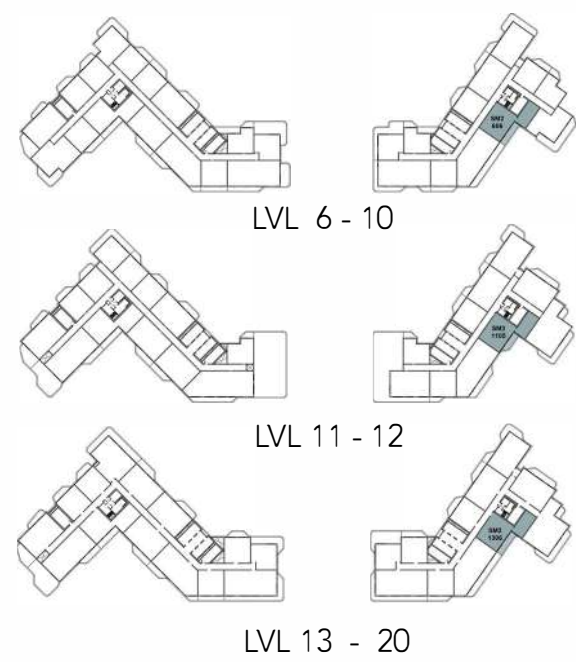
(*) Starting from



TWO BEDROOM (TYPE - 3)

No. of BR	2
Total Area	1,326 Sq.ft *

(*) Starting from

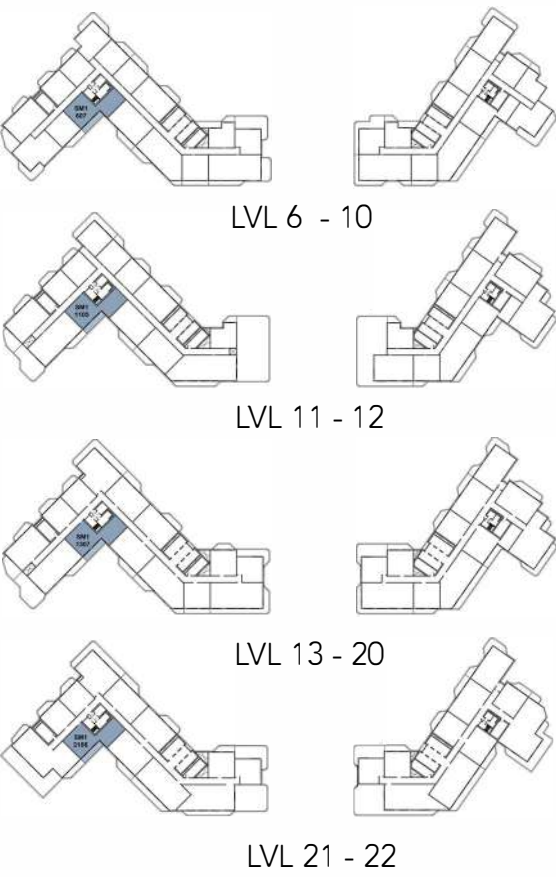


Disclaimer: Dimensions, apartment areas & layouts are indicative and may differ slightly during subsequent design development stages

TWO BEDROOM (TYPE - 4)

No. of BR	2
Total Area	1,428 Sq.ft *

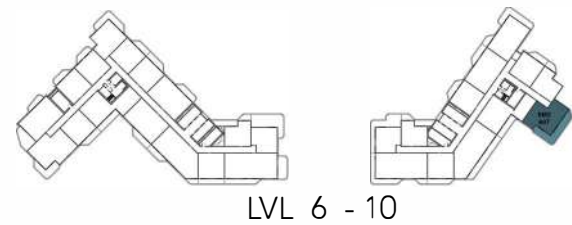
(*) Starting from



TWO BEDROOM (TYPE - 5)

No. of BR	2
Total Area	1,488 Sq.ft *

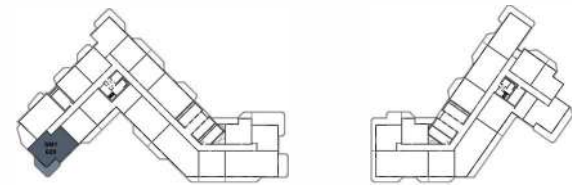
(*) Starting from



TWO BEDROOM (TYPE - 6)

No. of BR	2
Total Area	1,499 Sq.ft *

(*) Starting from

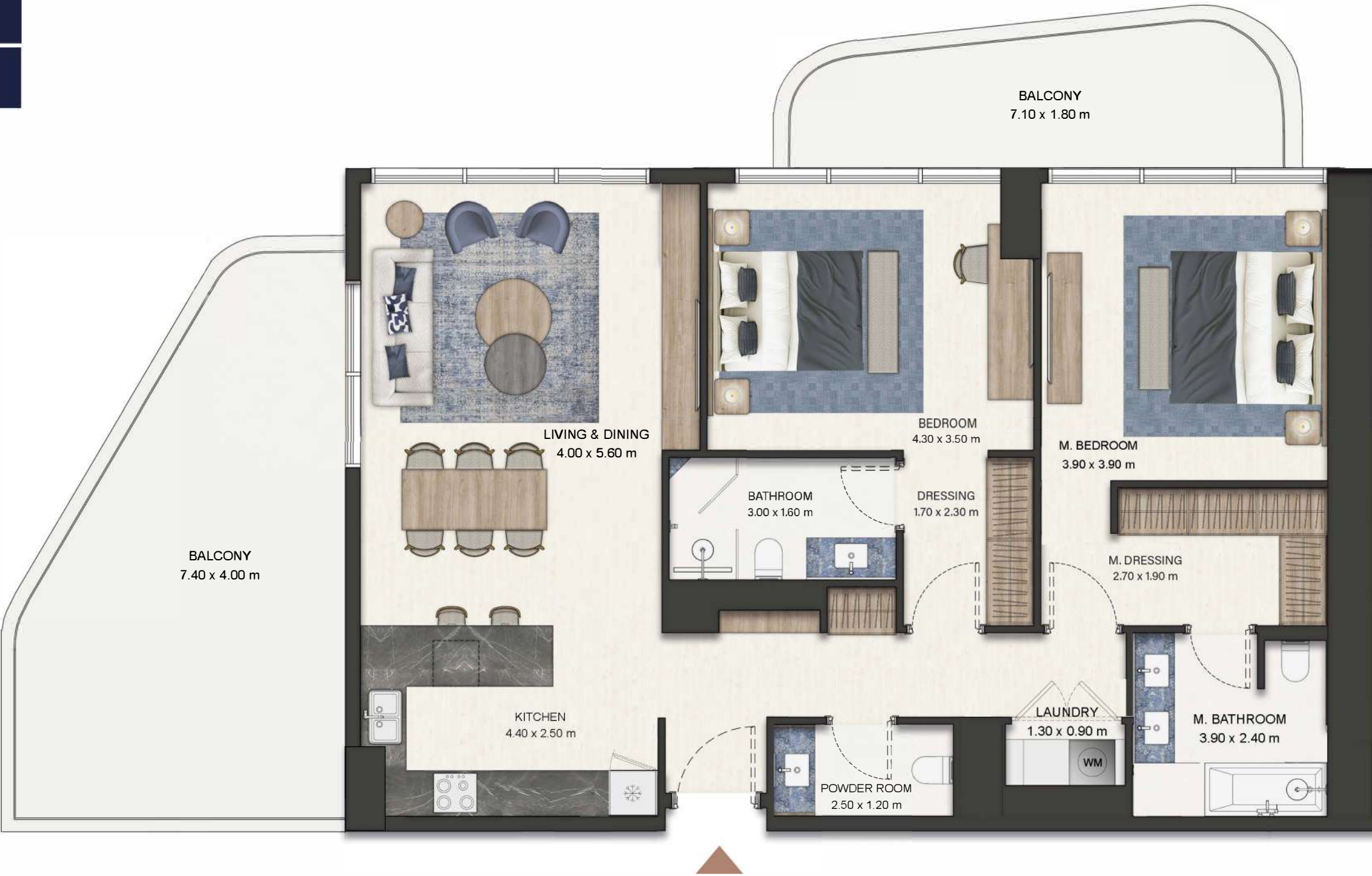
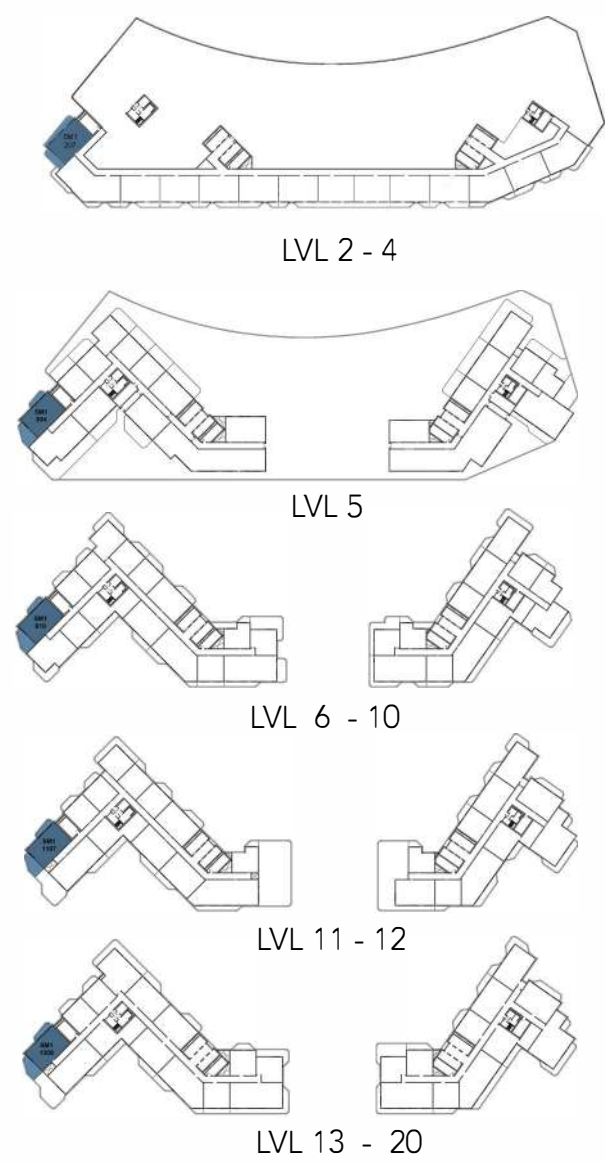


LVL 6 - 10

TWO BEDROOM (TYPE - 1)

No. of BR	2
Total Area	1,354 Sq.ft *

(*) Starting from

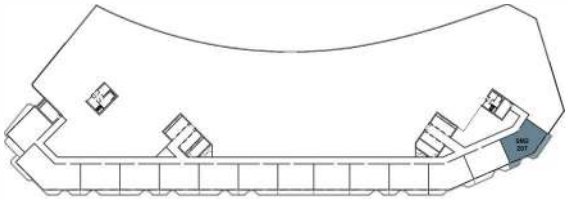


Disclaimer: Dimensions, apartment areas & layouts are indicative and may differ slightly during subsequent design development stages

TWO BEDROOM (TYPE - 8)

No. of BR	2
Total Area	1,450 Sq.ft*

(*) Starting from



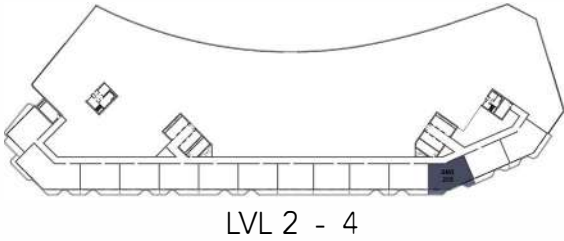
LVL 2 - 4

Disclaimer: Dimensions, apartment areas & layouts are indicative and may differ slightly during subsequent design development stages

TWO BEDROOM (TYPE - 9)

No. of BR	2
Total Area	1,366 Sq.ft *

(*) Starting from

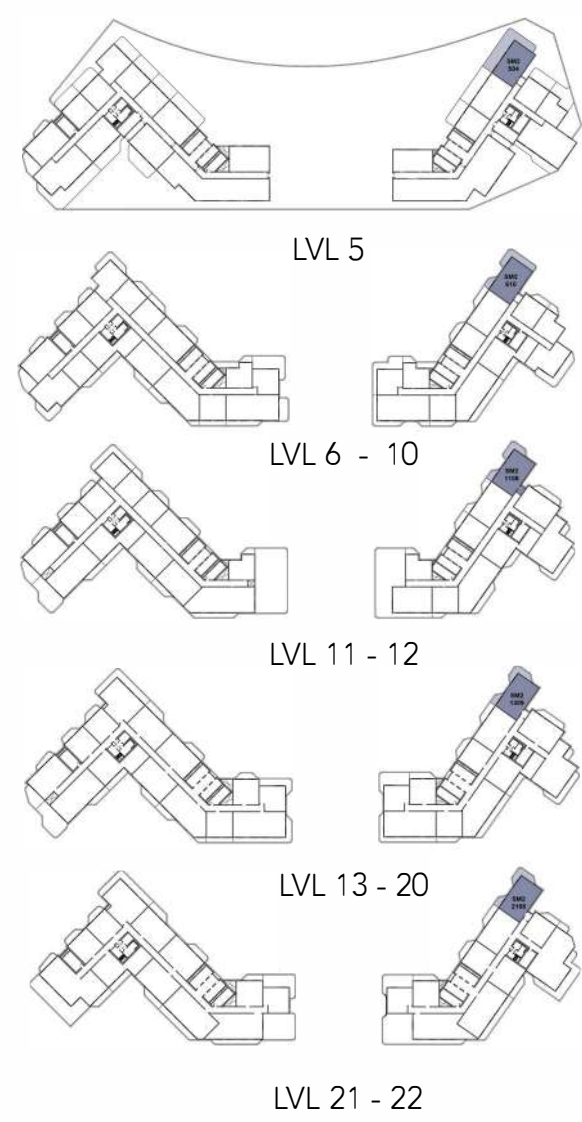


Disclaimer: Dimensions, apartment areas & layouts are indicative and may differ slightly during subsequent design development stages

TWO BEDROOM (TYPE - 10)

No. of BR	2
Total Area	1,476 Sq.ft *

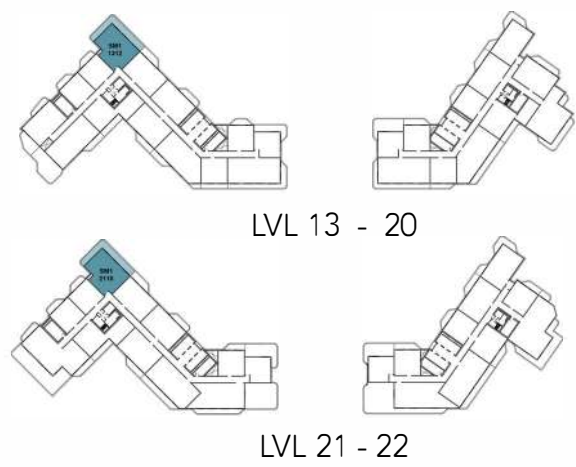
(*) Starting from



TWO BEDROOM (TYPE - 11)

No. of BR	2
Total Area	1,644 Sq.ft *

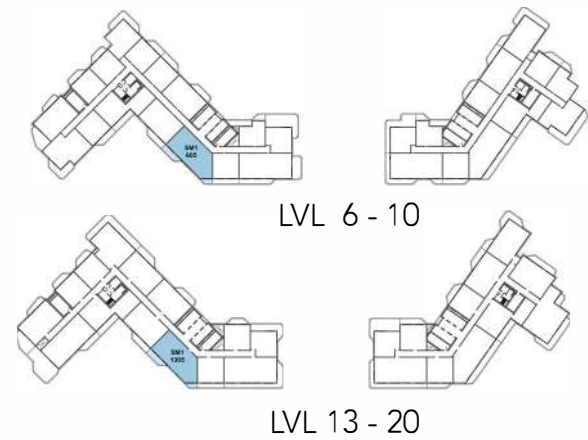
(*) Starting from



TWO BEDROOM (TYPE - 12)

No. of BR	2
Total Area	1,666 Sq.ft *

(*) Starting from

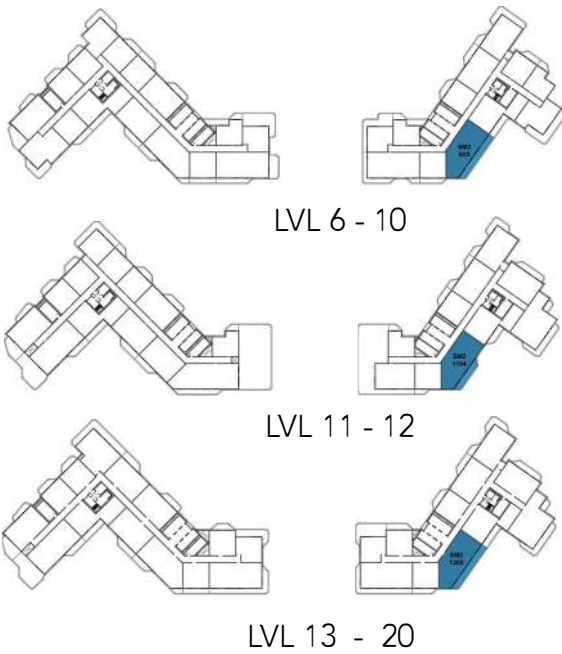


Disclaimer: Dimensions, apartment areas & layouts are indicative and may differ slightly during subsequent design development stages

TWO BEDROOM (TYPE - 13)

No. of BR	2
Total Area	1,735 Sq.ft *

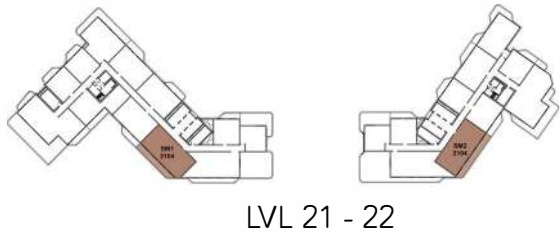
(*) Starting from



THREE BEDROOM (TYPE - 1)

No. of BR	3
Total Area	1,878 Sq.ft *

(*) Starting from

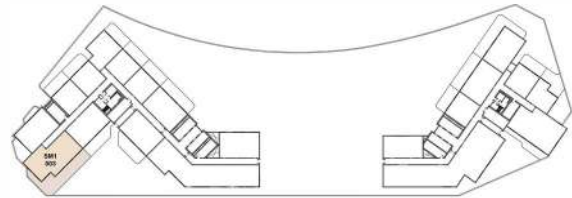


LVL 21 - 22

THREE BEDROOM (TYPE - 2)

No. of BR	3
Total Area	2,679 Sq.ft

(*) Starting from

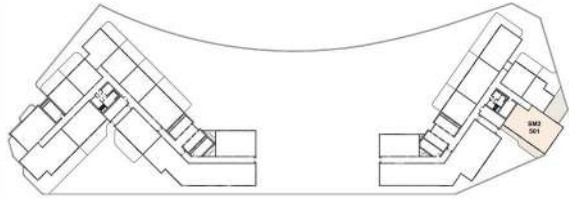


LVL 5

THREE BEDROOM (TYPE - 3)

No. of BR	3
Total Area	2,664 Sq.ft

(*) Starting from



LVL 5

Disclaimer: Dimensions, apartment areas & layouts are indicative and may differ slightly during subsequent design development stages

THREE BEDROOM (TYPE - 4)

No. of BR	3
Total Area	4,514 Sq.ft *

(*) Starting from

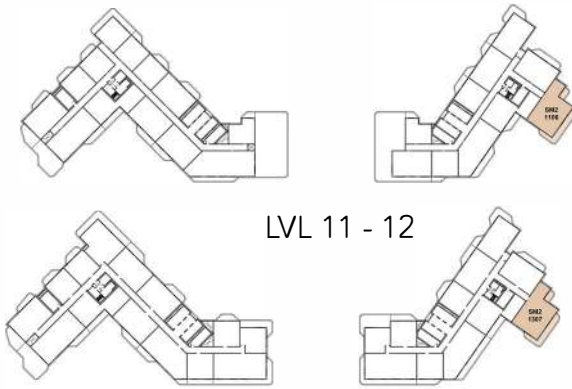


Disclaimer: Dimensions, apartment areas & layouts are indicative and may differ slightly during subsequent design development stages

THREE BEDROOM (TYPE - 5)

No. of BR	3
Total Area	1,861 Sq.ft *

(*) Starting from



LVL 11 - 12

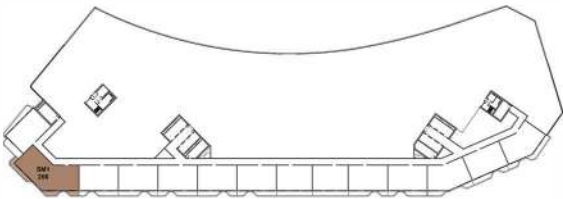
LVL 13 - 20

Disclaimer: Dimensions, apartment areas & layouts are indicative and may differ slightly during subsequent design development stages

THREE BEDROOM (TYPE - 6)

No. of BR	3
Total Area	2,233 Sq.ft *

(*) Starting from

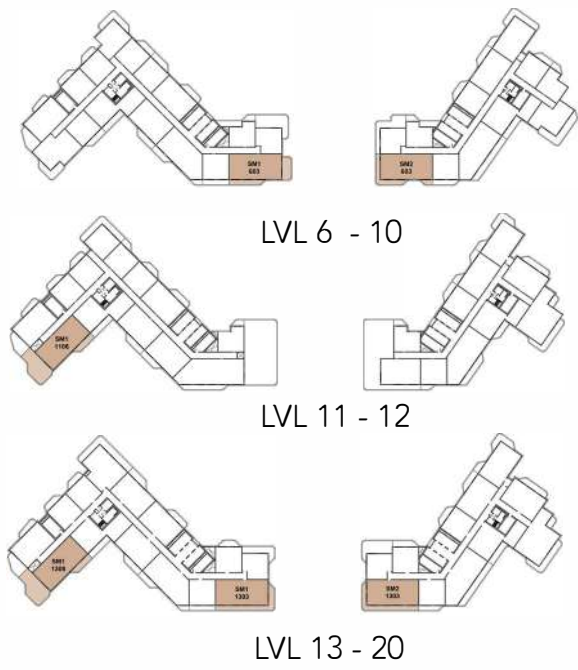


LVL 2 - 4

THREE BEDROOM (TYPE - 1)

No. of BR	3
Total Area	1,740 Sq.ft *

(*) Starting from



Disclaimer: Dimensions, apartment areas & layouts are indicative and may differ slightly during subsequent design development stages

4-BED PENTHOUSE (TYPE-1)

No. of BR	4
Total Area	6,233 Sq.ft

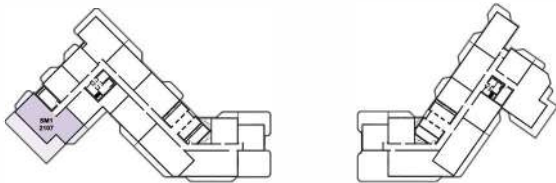
(*) Starting from



LOWER LEVEL



UPPER LEVEL

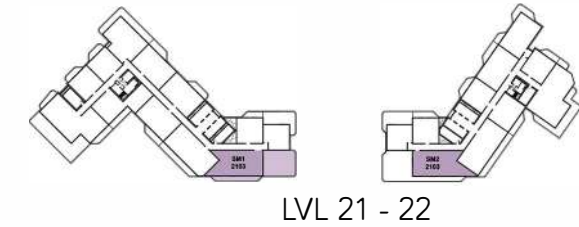


LVL 21 - 22

4-BED PENTHOUSE (TYPE-2)

No. of BR	04 - PH
Total Area	5,038 Sq.ft *

(*) Starting from



LOWER LEVEL



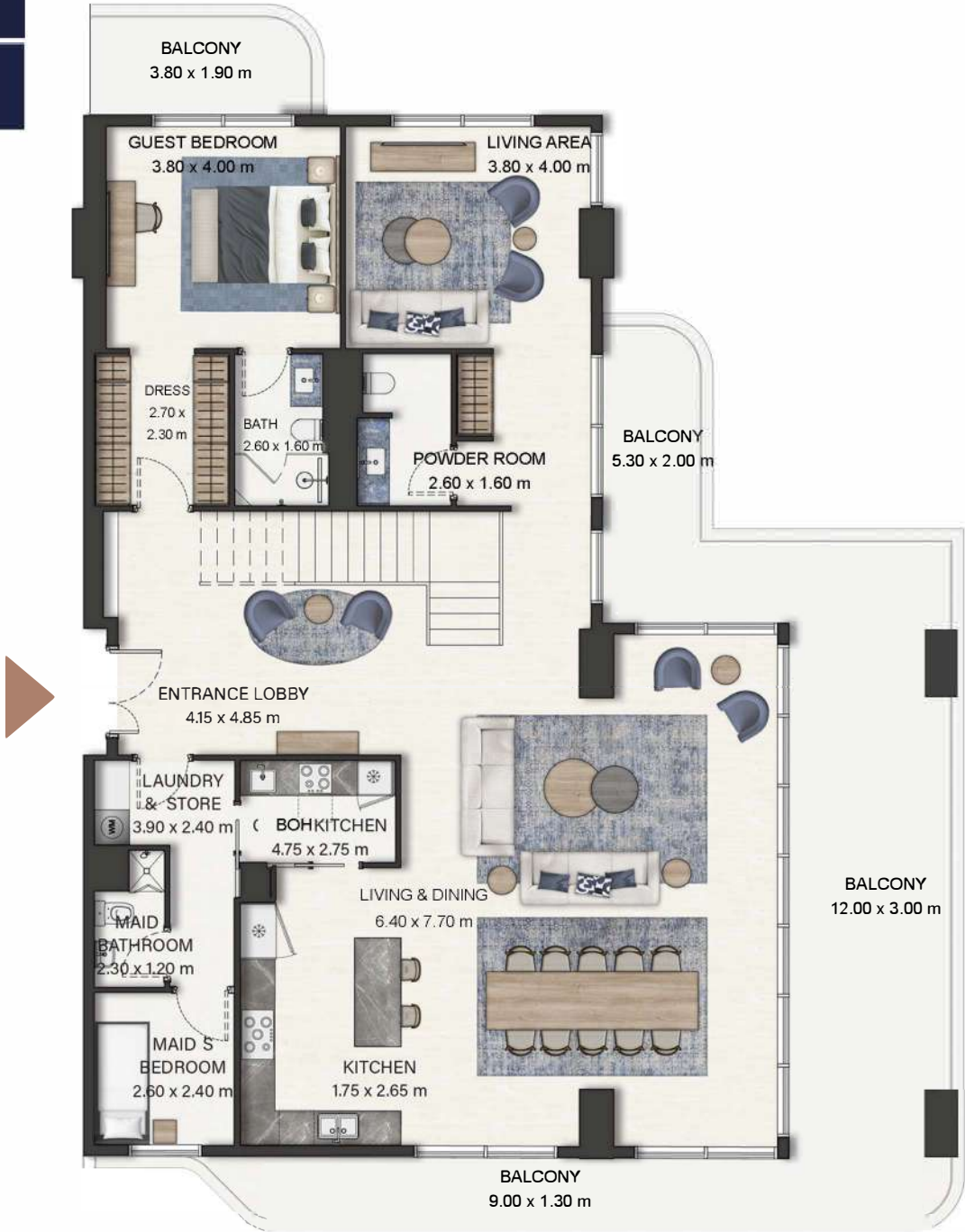
UPPER LEVEL

Disclaimer: Dimensions, apartment areas & layouts are indicative and may differ slightly during subsequent design development stages

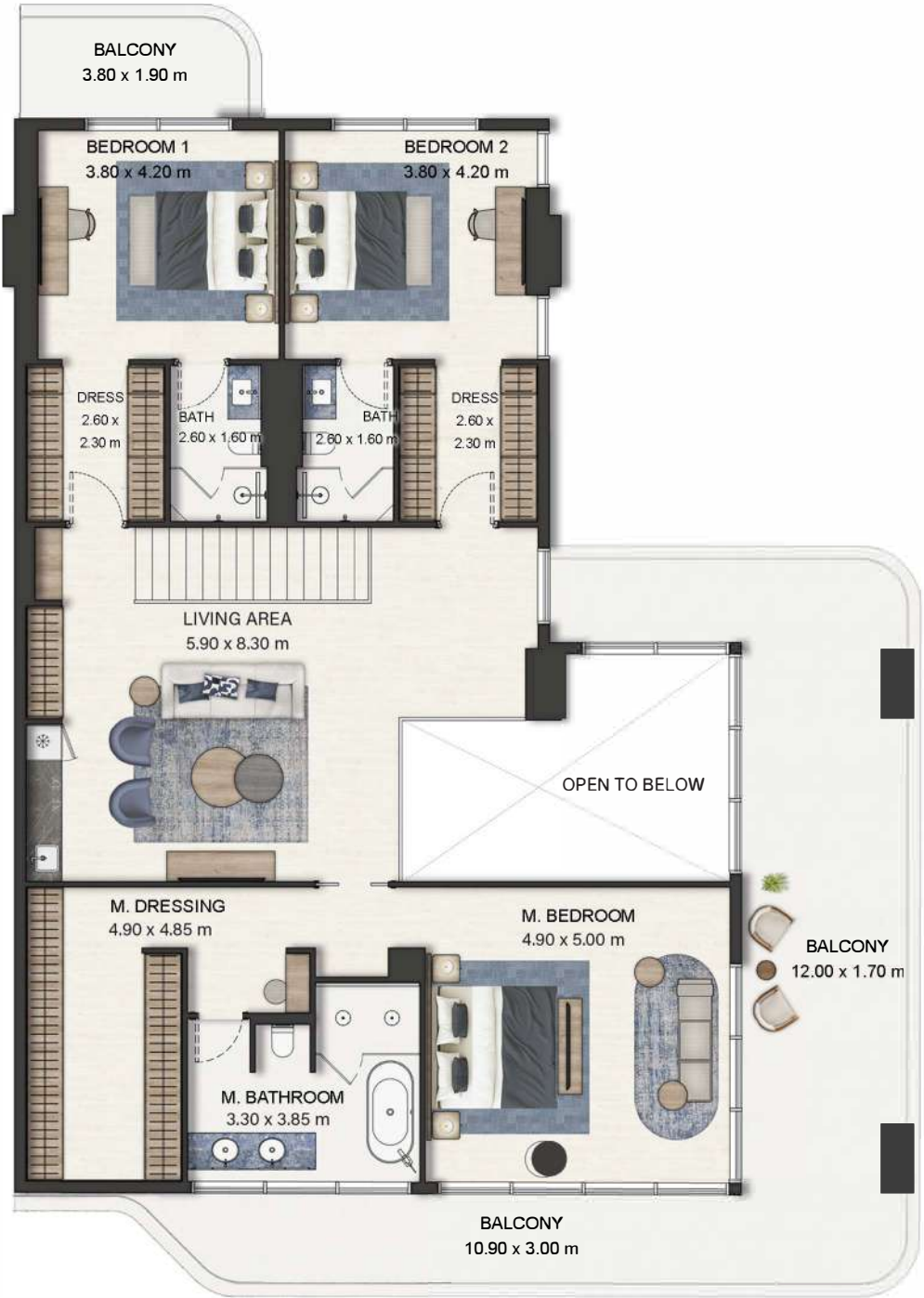
4-BED PENTHOUSE (TYPE-3)

No. of BR	4
Total Area	4,987 Sq.ft

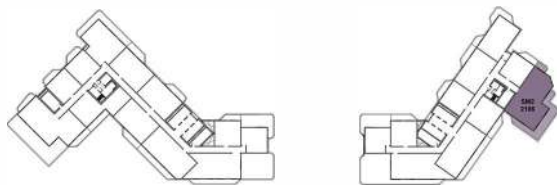
(*) Starting from



LOWER LEVEL



FIRST LEVEL



LVL 21 - 22

Disclaimer: Dimensions, apartment areas & layouts are indicative and may differ slightly during subsequent design development stages

3-BED TOWNHOUSE (TYPE-1)

No. of BR	3
Total Area	3,287 Sq.ft *

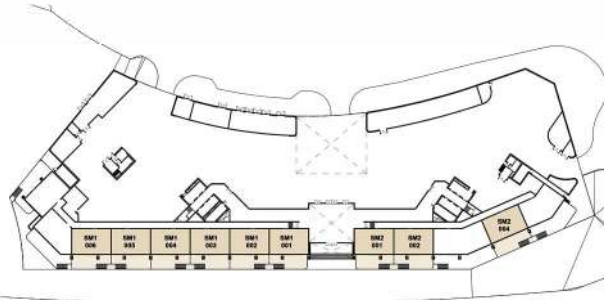
(*) Starting from



GROUND LEVEL



FIRST LEVEL



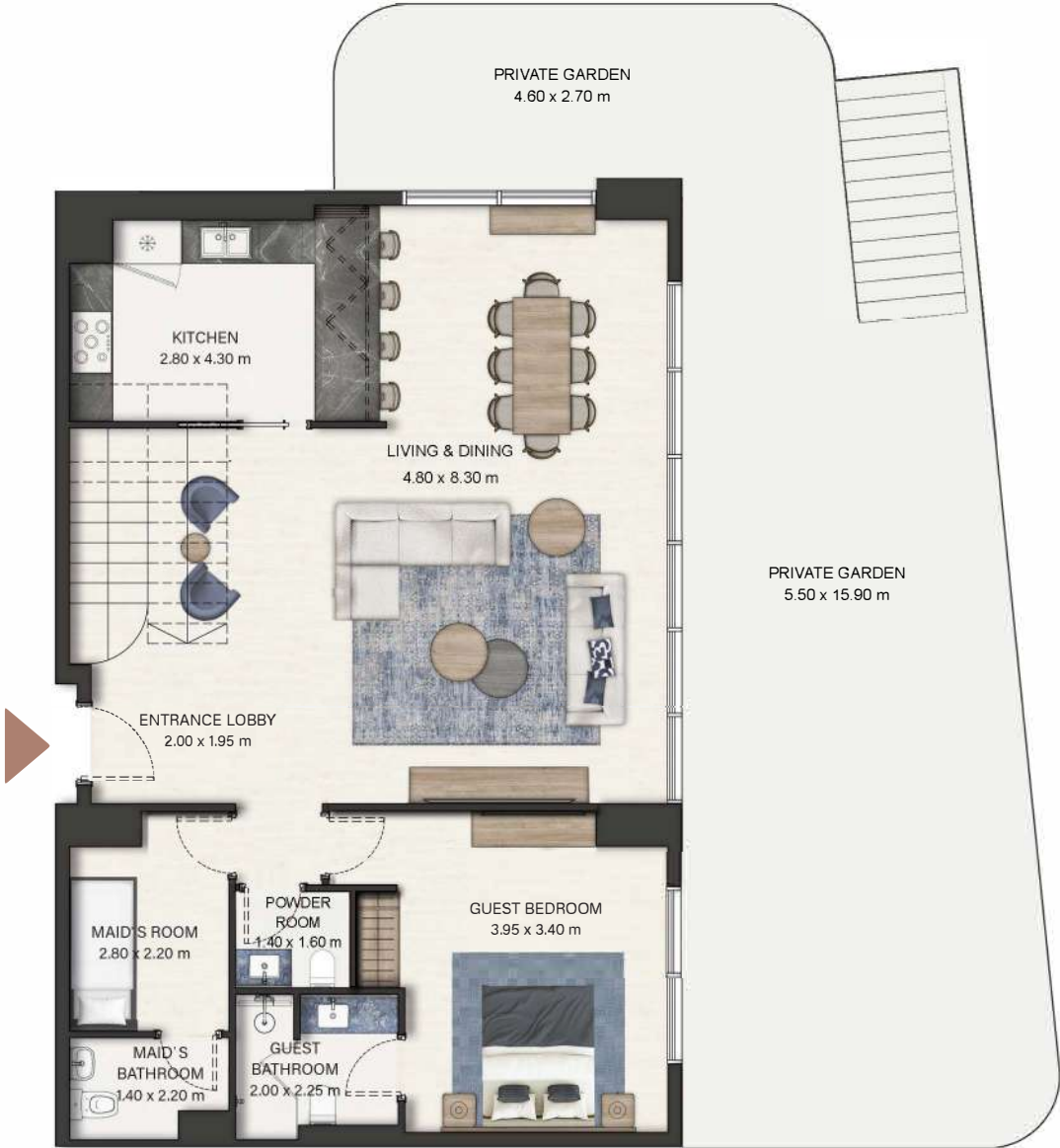
LVL G - 1

Disclaimer: Dimensions, apartment areas & layouts are indicative and may differ slightly during subsequent design development stages

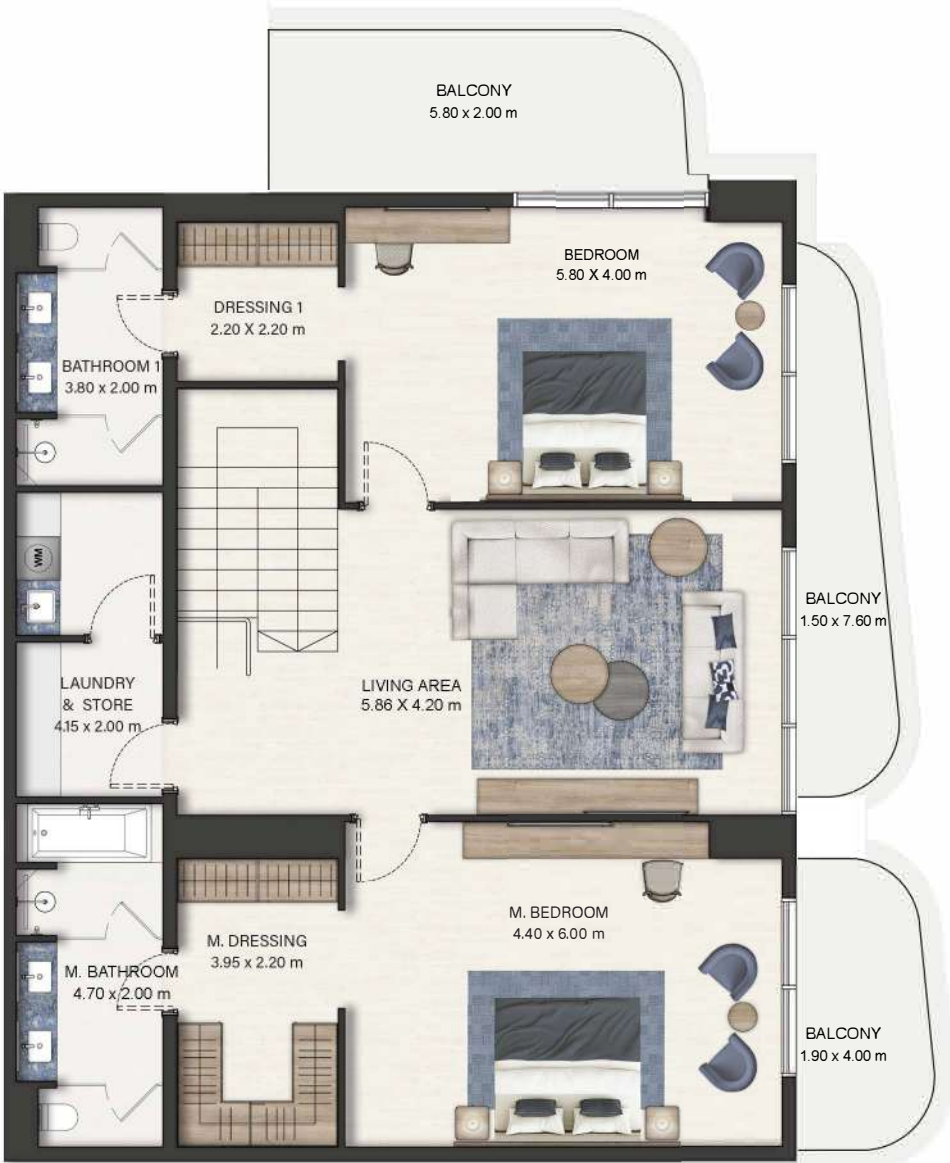
3-BED TOWNHOUSE (TYPE-1A)

No. of BR	3
Total Area	3,745 Sq.ft

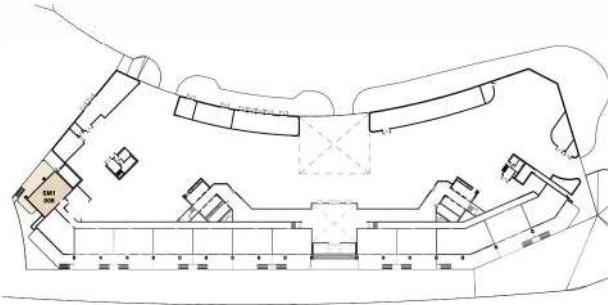
(*) Starting from



GROUND LEVEL



FIRST LEVEL



LVL G - 1

Disclaimer: Dimensions, apartment areas & layouts are indicative and may differ slightly during subsequent design development stages

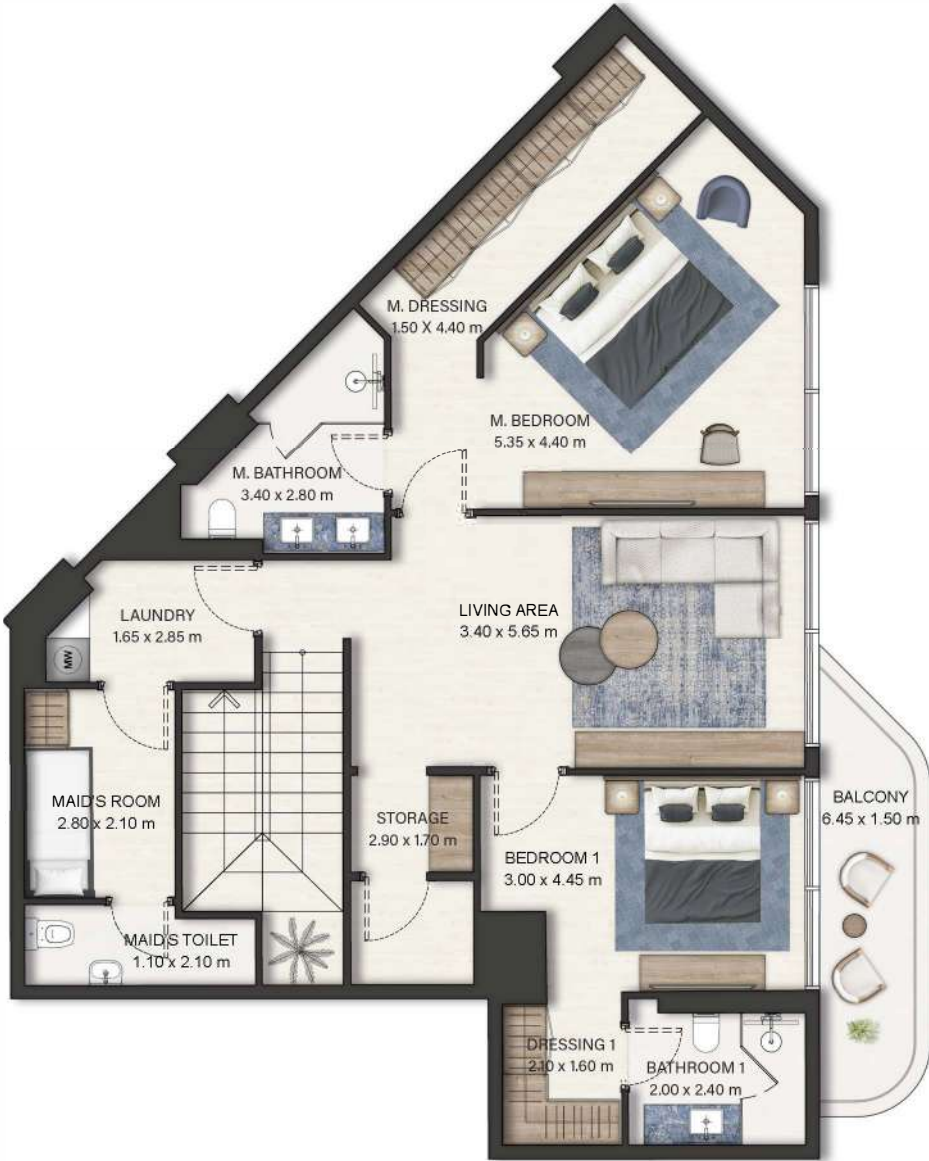
3-BED TOWNHOUSE (TYPE-2)

No. of BR	3
Total Area	3,188 Sq.ft

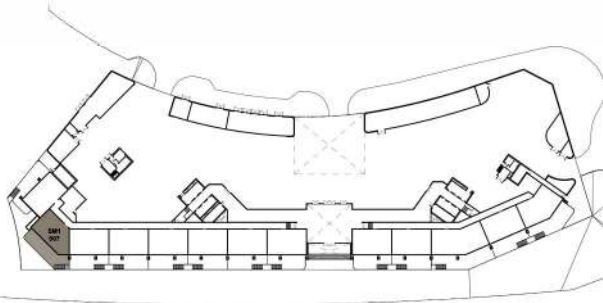
(*) Starting from



GROUND LEVEL



FIRST LEVEL



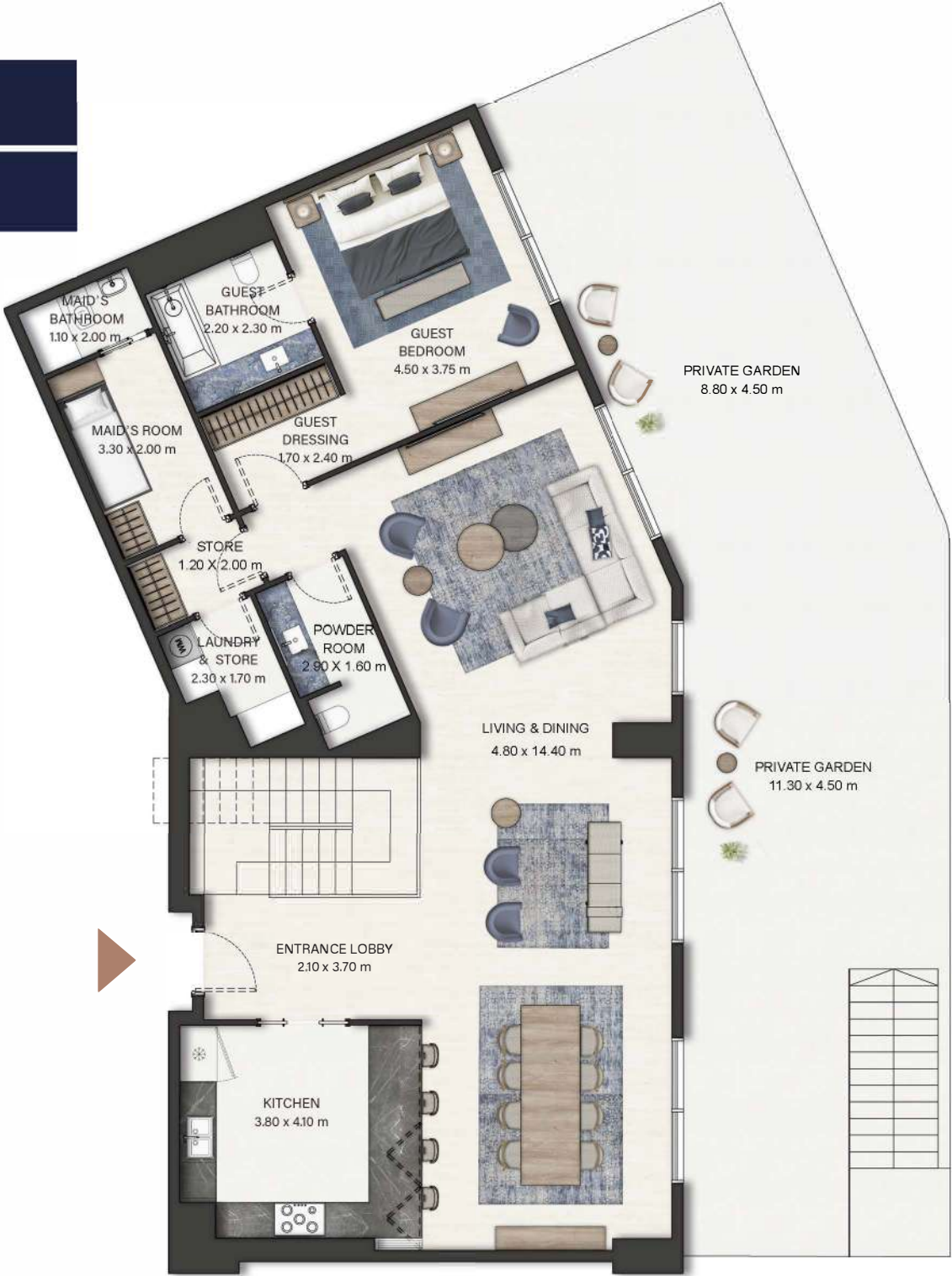
LVL 1 - 2

Disclaimer: Dimensions, apartment areas & layouts are indicative and may differ slightly during subsequent design development stages

4-BED TOWNHOUSE (TYPE-3)

No. of BR	4
Total Area	4,722 Sq.ft

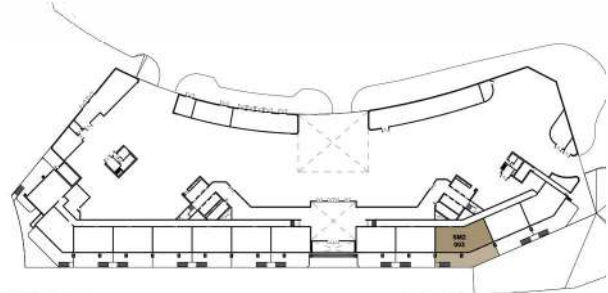
(*) Starting from



GROUND LEVEL



FIRST LEVEL



LVL 1 - 2

Disclaimer: Dimensions, apartment areas & layouts are indicative and may differ slightly during subsequent design development stages

3-BED TOWNHOUSE (TYPE-4)

No. of BR	3
Total Area	3,767 Sq.ft

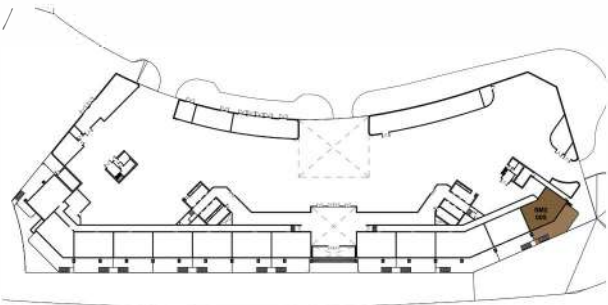
(*) Starting from



GROUND LEVEL



FIRST LEVEL



LVL 1 - 2

Disclaimer: Dimensions, apartment areas & layouts are indicative and may differ slightly during subsequent design development stages